



HP7 **2K**

Smart Home Video Doorphone

A connected choice for safer, smarter home access

It's time to upgrade your old intercom to be internet connected, remotely accessible and app controllable. EZVIZ's first-ever HP7 Video Doorphone maximizes the convenience for homeowners to view, talk, and grant access to visitors even if they're not home. It also enhances home safety, as the 2-in-1 outdoor camera and phone helps record videos in 2K clarity and detect people with real-time mobile notifications.



2K Resolution



7-Inch Color Touch Screen



Remote Door/Gate Unlock¹



2-Wire



Smart Human Motion Detection



Two-Way Talk (Supports voice changer feature)



Built-In Doorbell with Multiple Ringtones



Smart RFID Unlock (3 tags included)



Weatherproof Design



3 Name Cards Included



Supports 2.4 / 5 GHz Dual-Band Wi-Fi



Supports MicroSD Card (Up to 512 GB) & EZVIZ CloudPlay Storage²

Built to be reliable for houses and villas

The HP7 is ideal for anyone who seeks to replace their bulky intercom in a renovated home, or for those who are moving into a spacious villa and need convenient communication and confident security. This stylish kit combines a 2-in-1 outdoor video doorbell with a large indoor monitor and easily fits any home style.



2-Wire Installation
(Also compatible with 4-wire systems)

Wire Length



Waterproof Doorphone



Gate/Door Dual Controls¹



Manage your door easily - even remotely

Heavy dangling keys can now be history. The HP7 provides far easier access controls while adding visual protection to verify your visitors.



Swipe open with smart RFID
(3 tags included)



Unlock via the indoor monitor



Open the door using the
EZVIZ App

An all-in-one touch monitor to communicate & control

The 7-inch color touch screen is where you set up and manage your outdoor doorphone, respond to visitors, and save important video clips. Whenever a visitor rings your door, the indoor screen will automatically light up to let you know who's outside.

Versatile features

Crisp live viewing

Two-way talk

Gate/Door unlock

Video history and storage

(Supports microSD card of up to 512 GB)




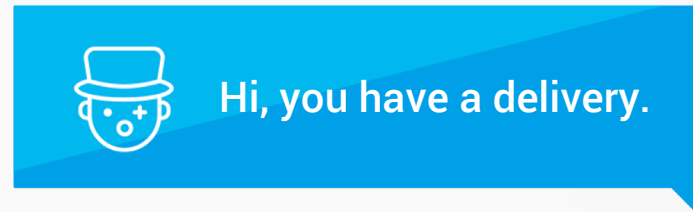
It's easier than ever to respond from afar

Even if you're not home, the HP7 makes sure you don't miss a visitor. You can always use your phone to stay connected, and open the door for guests remotely. When responding to uninvited strangers, you can enable change the voice feature to keep yourself unidentified and to add another layer of protection.

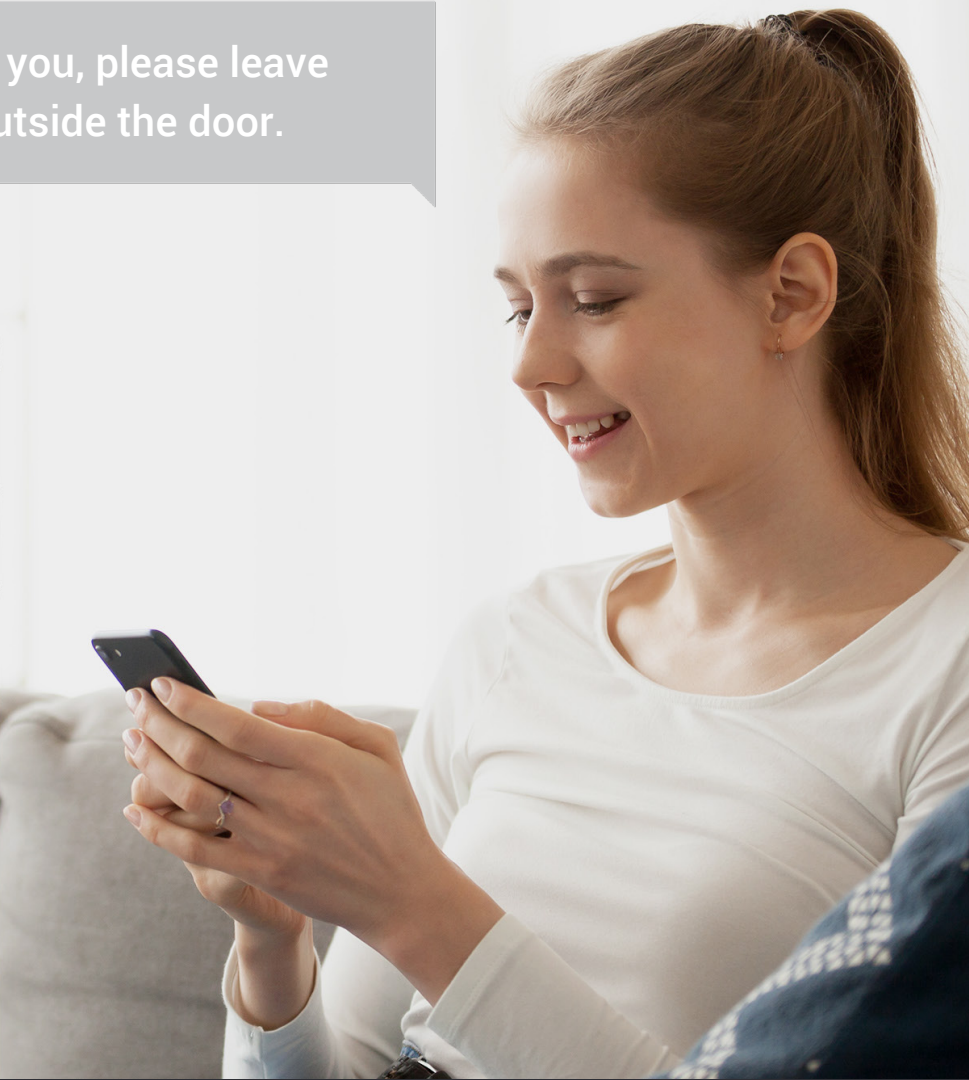
 Two-way Talk

 Remote Unlock

 Voice Changer for Privacy Protection



Thank you, please leave that outside the door.



Stunning 2K




Next-level vision for a home intercom


The HP7 is designed to render ultra-wide and clear imaging, from day to night. With a 162-degree viewing angle and 2K lens, you can easily see a postman from head to toe without pixelated or blurry details. The HP7 camera also provides 5-meter infrared night vision for peace-of-mind 24/7.

Enhanced security with smart human motion detection

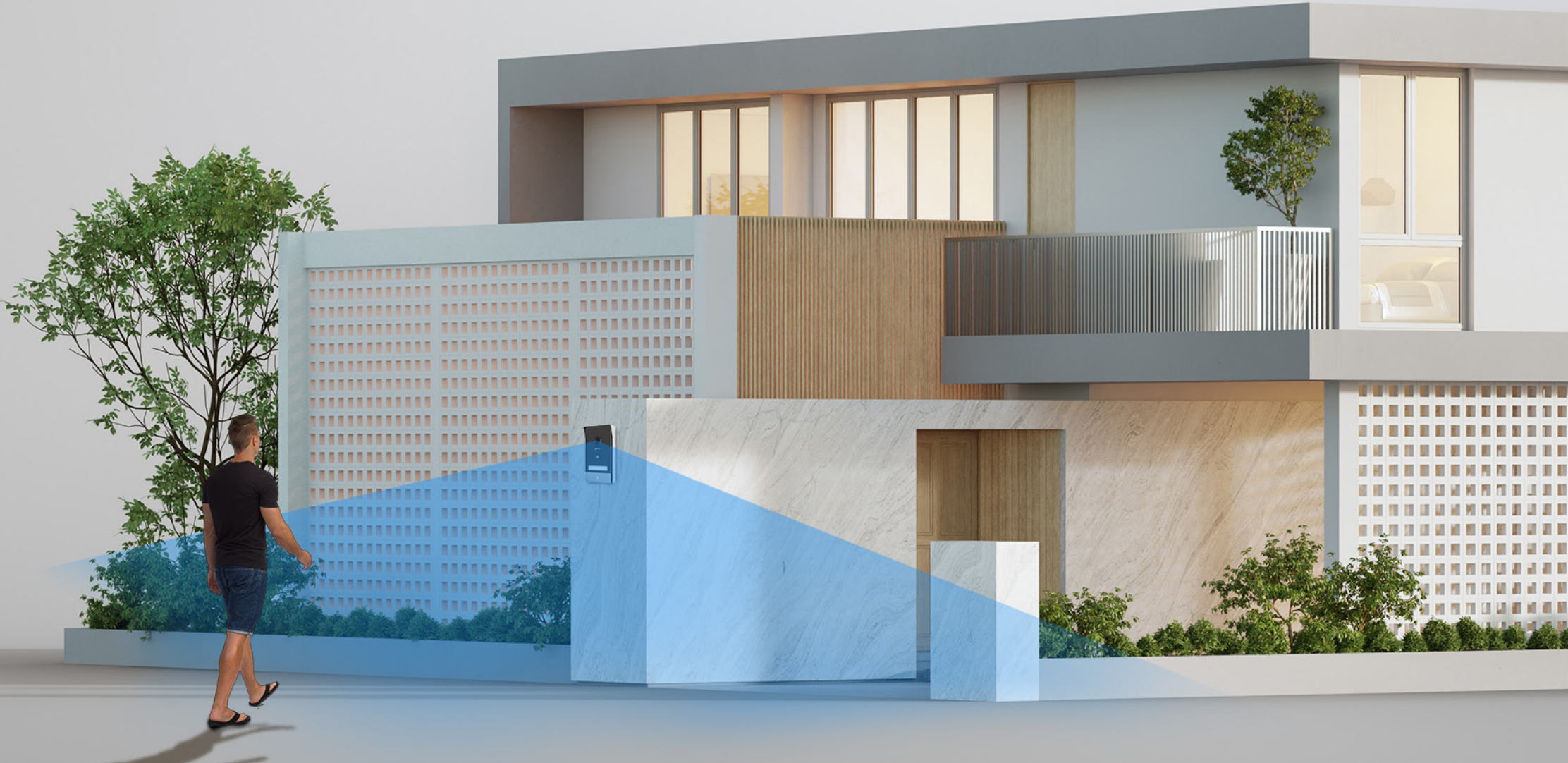
Whenever the HP7 video doorbell detects human activity at your front door, it will send you mobile notifications right away in case there's an uninvited guest. You can always fine-tune the detection sensitivity and set up specific detection zones to reduce unwanted alerts.

 Smart Human Motion Detection

 Customizable Detection Zone

 Adjustable Detection Sensibility

FREE No Subscription Fee



Thoughtful features for additional convenience



Know the right door to knock with backlit name cards



Customize your pleasant ring with multiple ringtone choices³

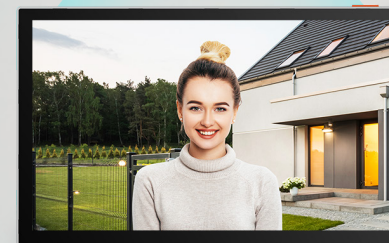
Elegant design elevates your front door

The HP7 kit adopts a refined, minimalist look, with a simple, consistent glossy black for both devices. A standout from traditional intercoms, the HP7 satisfies modern tastes for a stylish home. The indoor monitor screen also maximizes the touch area, enhancing the whole user experience.



Steady connection for boosted performance

To maximize the connected experience with remote controls, you can connect the indoor monitor to either the 2.4 or 5 GHz band. Enjoy strong Wi-Fi with lower latency, larger bandwidth, and a stable signal.



2.4 GHz 5 GHz

Enhanced viewing pleasure with smaller video files

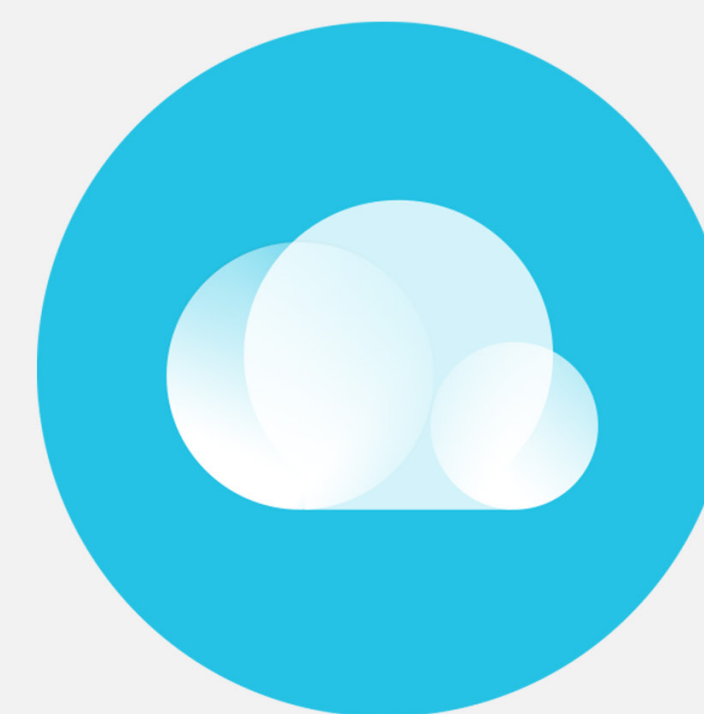
Compared against the prevailing H.264 video compression technology, H.265 creates a more fluid viewing experience with recorded footage. Meanwhile, you won't have to worry about large video files taking up too much of your storage space – H.265 technology can reduce their sizes by up to 50%⁴.

50% ↓
Video Storage Space

50% ↓
Required Bandwidth



Supports MicroSD Card²



Supports EZVIZ CloudPlay Storage²

Extra-Large, safe storage options that you can trust

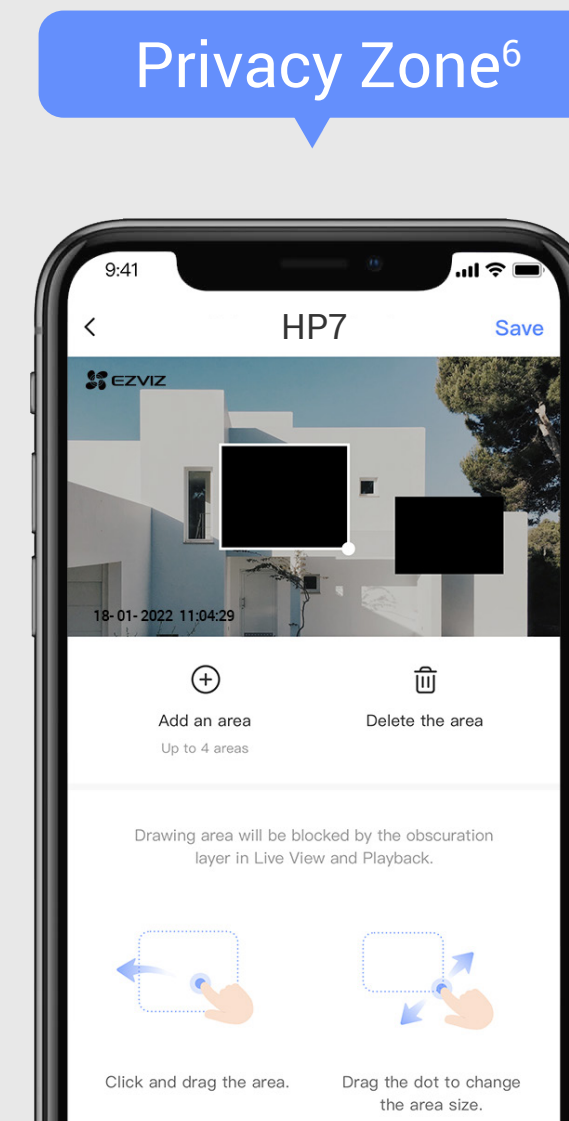
You can secure your recorded videos on a local microSD card of up to 512 GB, or subscribe to EZVIZ CloudPlay for fully-encrypted cloud storage.

We do our best to protect your data and privacy

We design the product to respectfully protect your data and privacy. You can also set up no filming zones⁶ to make sure recording only happens when it's appropriate and allowed.



EZVIZ has been awarded by DNV for **information security** (ISO/IEC 27001:2013), **personal data protection** (ISO/IEC 27701:2019), **cloud security** (CSA STAR) and more.



AES-128

Data Encryption

TLS

Data Transmission Encryption

1 To check the installation requirements and product compatibility, please refer to the User Manual for detailed information.

2 The local storage card must be purchased separately. The cloud storage service is only available in certain markets. Please verify the availability before making a purchase.

3 Users are able to customize the ringtone sent by the indoor display by touch controls or via the EZVIZ App. The outdoor doorbell only provides one default ringtone and cannot be customized.

4 Data from EZVIZ Lab's test results under standard conditions. Will vary with the frequency and complexity of the activity captured, and other environmental factors.

Specifications CS-HP7-R100-1W2TFC

Outdoor Doorbell

Image Sensor	1/2.7" Progressive Scan CMOS (Supports low light sensitivity)
Lens	2.0 mm @ F2.2,viewing angle: 162° (Diagonal)
Day & Night	IR-cut filter with auto-switching, 850 nm infrared light × 2 (max. 6m)
Max. Resolution	2048 × 1296
DNR	2D / 3D DNR
Video Compression	H.265 / H.264
Frame Rate	Max: 15fps; Self-Adaptive during network transmission

Connection and Function

Connection Method	Wired connection (2-Wired, capable with 4-Wired), digital signal transmission
Transmission Distance	Φ 2 x 0.75mm ² , max. 50m Φ 2 x 1.5mm ² , max. 100m Twisted pair, max. 120m
Open the door (Gate)	Support 2 wiring ports. 1-10m distance. The intercom panel provides a “dry”-contact connection, without an electric current, to connect to the button for automated gate, gate breaking capacity: 12V / 2A
Unlock (Electric strike plate)	Support 2 wiring ports. 1-10m distance. The electric strike plate or lock that you order must have a mechanical memory; the power supply to the electric strike plate or lock must not exceed 12V / 1.1A, otherwise should do as user manual.
Door Open Methods	1.RFID badge unlock (Badges × 3 pcs) 2.App remote unlock 3.Indoor display unlock

Outdoor Doorbell Interface

Audio Input	Built-in high-sensitivity microphone
Audio Output	Built-in high-power speaker
Doorbell Button	Yes. The light can be set on or off.
Name Card	Three handwritten name cards in total (one already on the intercom panel). The light can be set on or off.
Terminal	Two wiring ports to connect screen. Two wiring ports to connect gate. Two wiring ports to connect electric strike plate.

Functions

Intelligent Alarm	Smart human motion detection, Lingering Detection
Tamper Alarm	Supports
Video Intercom	Long-distance video two-way talk

General

Operation Conditions	-30°C to 60°C , Humidity 95% or less (non-condensing)
IP Grade	Waterproof, with shield cover
Size	161 × 87 × 20 mm (6.34 × 3.42 × 0.79 inch)

Specifications CS-HP7-R100-1W2TFC

Interior Display

Display size	7" touch screen
Resolution	1024 × 600

Interface

Audio Input	Built-in high-sensitivity microphone
Audio Output	Built-in high-power speaker
Button	Screen On / Off Button
Terminal	Two wiring ports to connect 1st outdoor doorbell. Two wiring ports to connect 2nd outdoor doorbell. Two wiring ports to connect extra interior screen (not included in the kit)
Storage	Supports microSD card up to 512 GB Supports EZVIZ Cloud storage

Network Parameters

Protocol	EZVIZ Cloud Proprietary Protocol
Interface Protocol	EZVIZ Cloud Proprietary Protocol
Protocol	EZVIZ Connect Protocol

Wi-Fi Parameters

Wi-Fi Standard	IEEE802.11b, 802.11g, 802.11n, 802.11ac
Frequency Range	2.4G: 2.4 GHz ~ 2.4835 GHz 5G: 5.15 GHz ~ 5.25 GHz
Channel Bandwidth	Supports 20MHz
Security	64 / 128-bit WEP, WPA / WPA2, WPA-PSK / WPA2-PSK
Transmission Rate	11b: 11Mbps, 11g: 54Mbps, 11n: 150Mbps, 11ac: 433.3Mbps

Function

Multiple ringtones	Up to 20 ringtones
Functions	Live view, playback, two-way talk, video call

General

Operation Conditions	-10°C to 45°C, humidity 95% or less (non-condensing)
Weight	Net weight: 855 g (30.16 oz) With package: 1825 g (64.37 oz)
Size	180 × 111 × 15 mm (7.09 × 4.37 × 0.59 inch)
Power Supply	DC 24V / 1.5A power supply, adaptor (100- 240Vac)
Power Consumption	8W, Max. 24W

In the box

- Monitor
- Wall Bracket for Monitor
- Power Adapter for Monitor
- Drill Template for Monitor
- Intercom Panel
- Drill Template for Intercom Panel
- Screwdriver
- Badges (×3)
- Screw Kit (×2)
- Name Card (×2)
- Wires and Wire Connectors
- Regulatory Information (×2)
- Quick Start Guide

Certifications

CE / REACH / WEEE / RoHS

Specifications are subject to change without notice. "🌈", "EZVIZ" and other trademarks and logos are the properties of EZVIZ in various jurisdictions.